



OVER THE RIVER AND TO THE FARM

Connecting Agriculture and the Environment
With Outdoor Learning



INTRODUCTION

Me

- Create standards-based lessons for K-12 teachers
 - Provide county-level education coordinators to come into your classrooms
 - Teacher Summer Ag Academies throughout the state
- Much More!

IAITC

Education Specialist:

Develop and implement IAITC programming and resource development efforts that assist the IATIC programs, teacher training, and in-service teacher training.

Experience and Education:

Former Middle School Science, ELA, and SS teacher

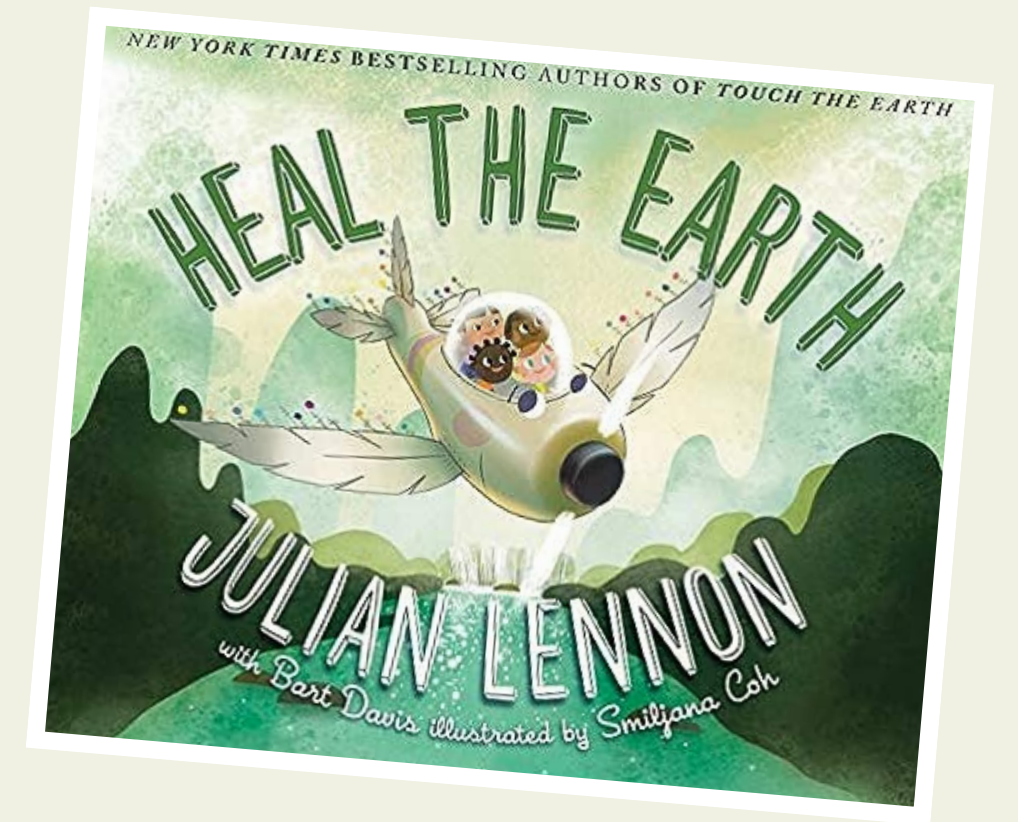
B.S. Environmental Science and Art

B.A. Middle Level Education





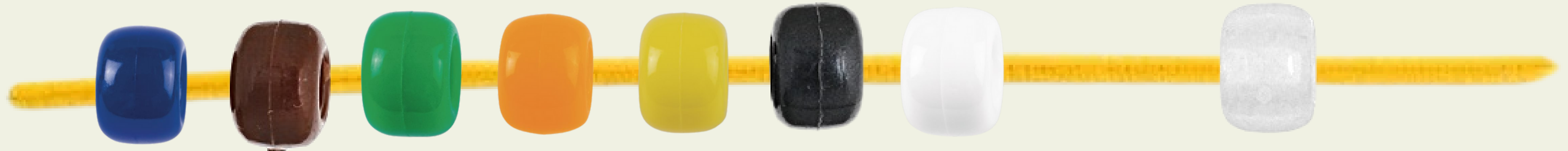
CIRCLE OF EARTH BRACELET



soil

sun: warmth

night



water

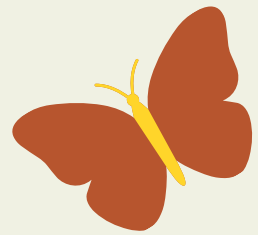
plants

sun: light

air/wind




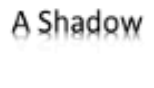


humans = stewards

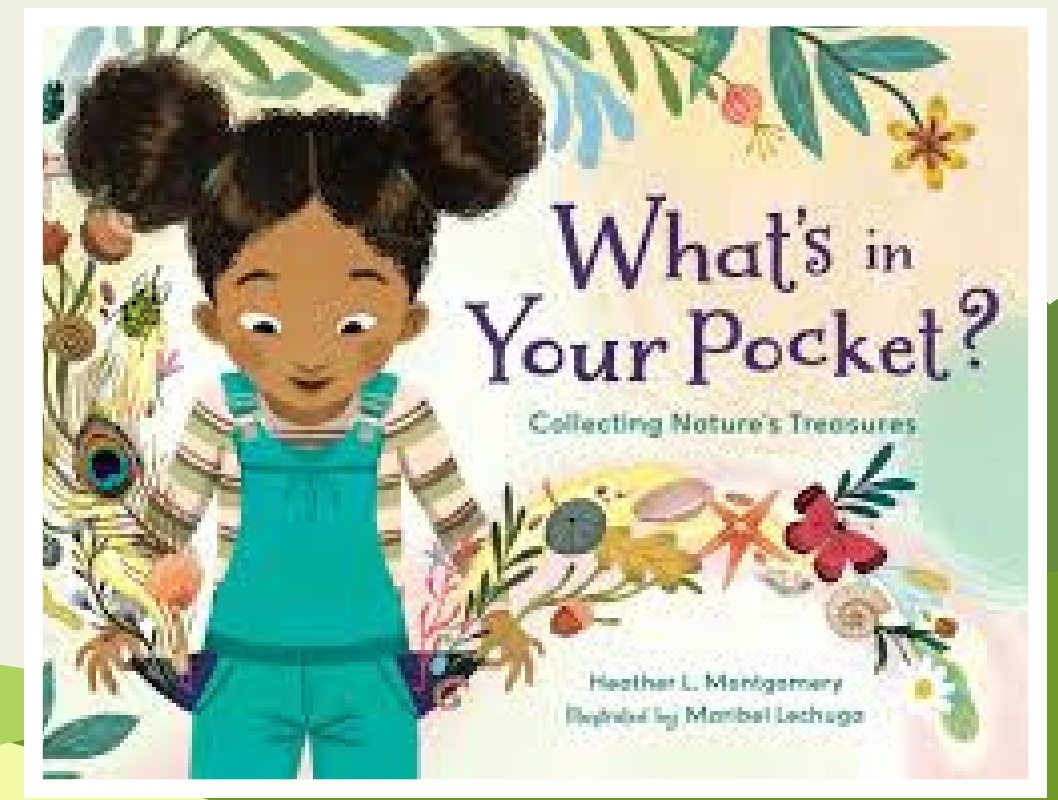
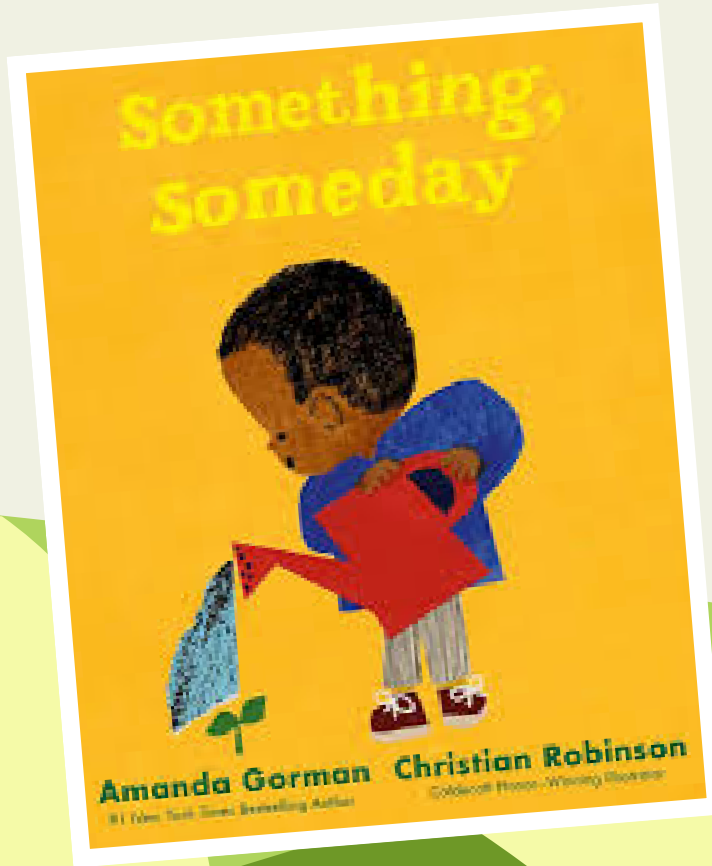


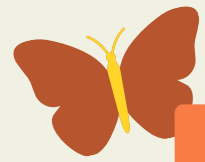


Outdoor BINGO

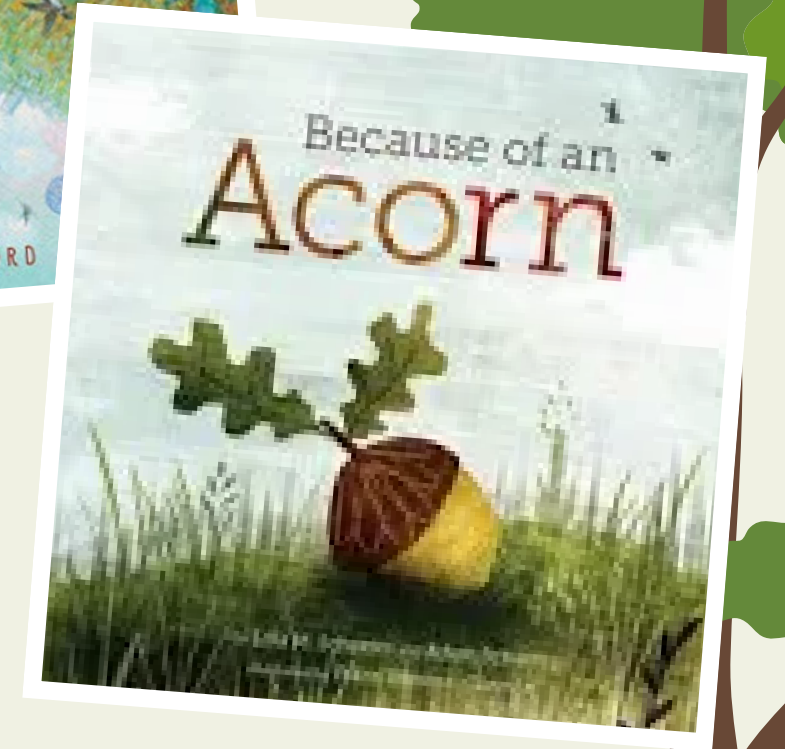


Rock out of place 	An animal sound	Flower Blossom 	Something of your favorite color	Squirrel 
Something that snaps 	Oak tree leaf	Something bumpy 	Pine cone	Flying Bird 
Sprouting plant 	Something with patterns	FREE SPACE	Moss 	A Shadow 
Insect 	Crumbled sidewalk	Maple tree leaf 	5 of the same thing in different places	Crow 
Multi-colored leaf 	Bird singing 	Something that crunches	Bird looking for worms 	Green grass





READING RINGS



Pecan Placemat



PECANS

Pecans are a type of nut we eat!

Seed Seed
 Sprout Sprout
 Seedling Seedling
 Tree _____
 Flower _____
 Fruit _____

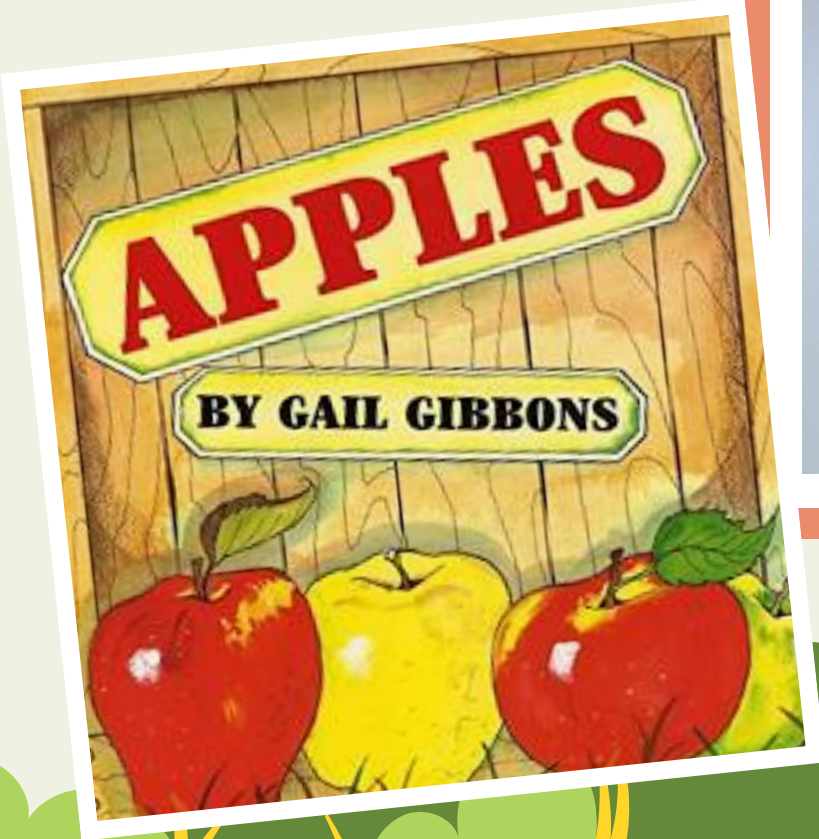
Pecan pie is a yummy holiday treat!

Pecan Life Cycle

Color the tree leaves green
 Color the tree trunk brown

Pecans grow on trees!

Circle the picture.



Apple Blossom Tree

Peaches

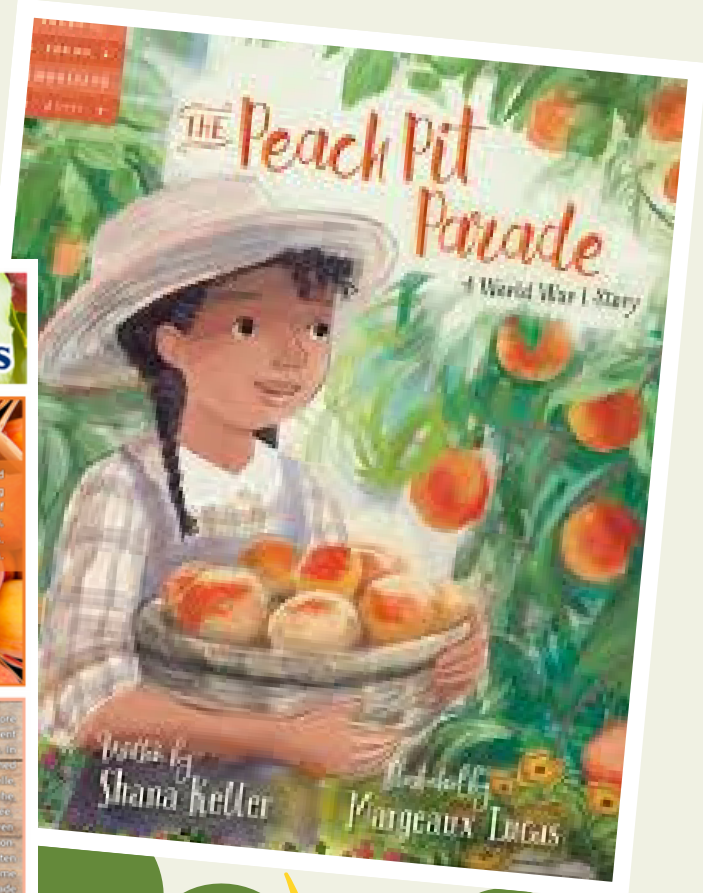
FARM BITES

In 2022, the United States produced over 625,000 tons of peaches on about 75,000 acres of land. While Illinois isn't the most common place to find peaches, there are about 1,470 acres dedicated to peach production across the state.

Peaches are grown throughout the United States in areas with the correct growing conditions. The number one producer of peaches is California. They produce over 45% of the total peaches in the United States. Peaches grow on trees in orchards.

Illinois classifies peaches into two categories: freestone and clingstone. Freestone peaches make up about 90% of Illinois peaches. Freestone peaches are soft and the pit falls right out when you cut it. These peaches are the ones you will likely find at the grocery store or farmers market. Clingstone peaches have a pit that stays attached to the inside of the peach, making it hard to remove. Most often these peaches are canned or frozen.

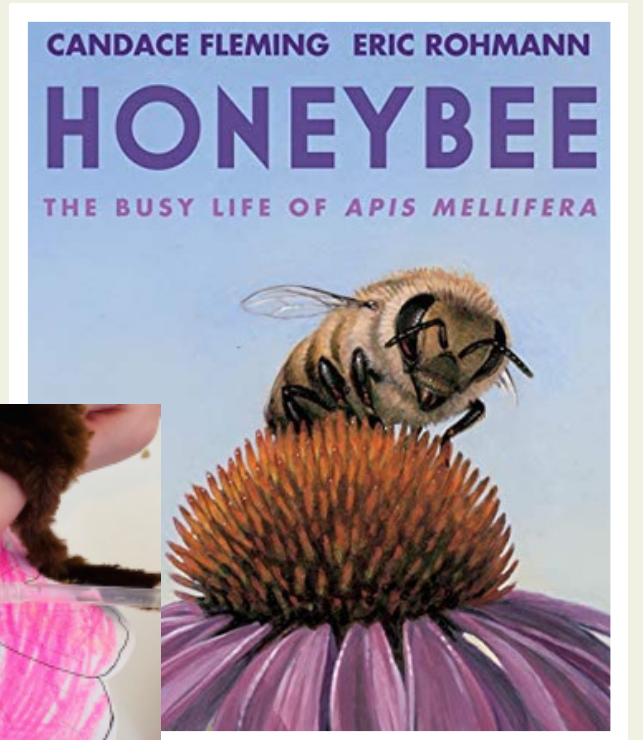
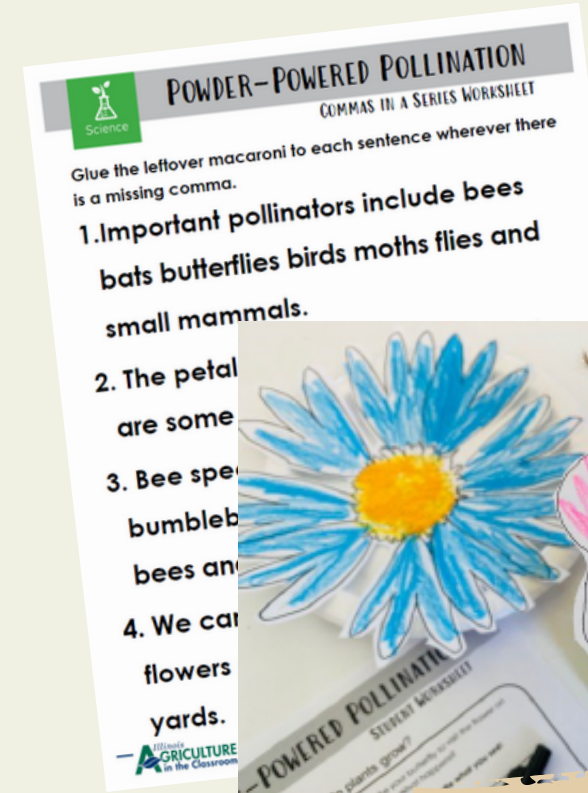
Creating natural products like jams and jellies is a fun way to use up extra peaches. Try making peach jam or jelly. You can also use peaches to make peach cobbler, peach ice cream, and peach pie.



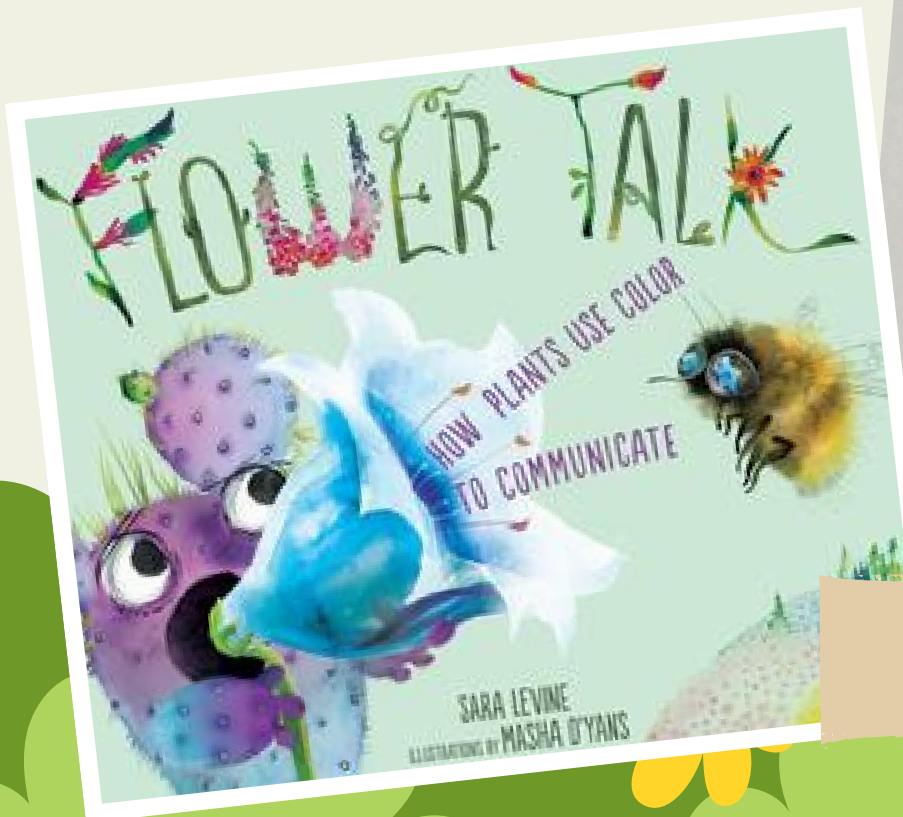
THROW & GROW



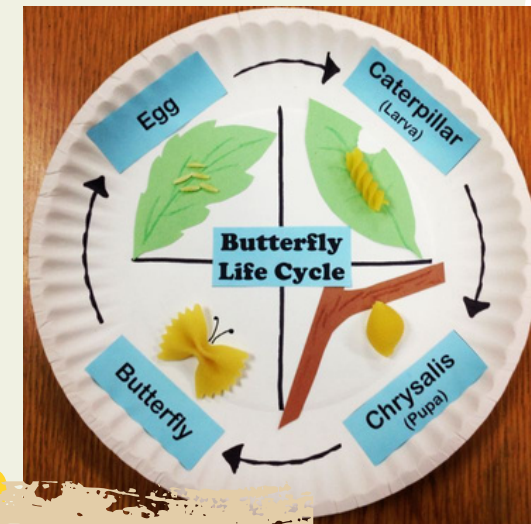
Bag Butterfly



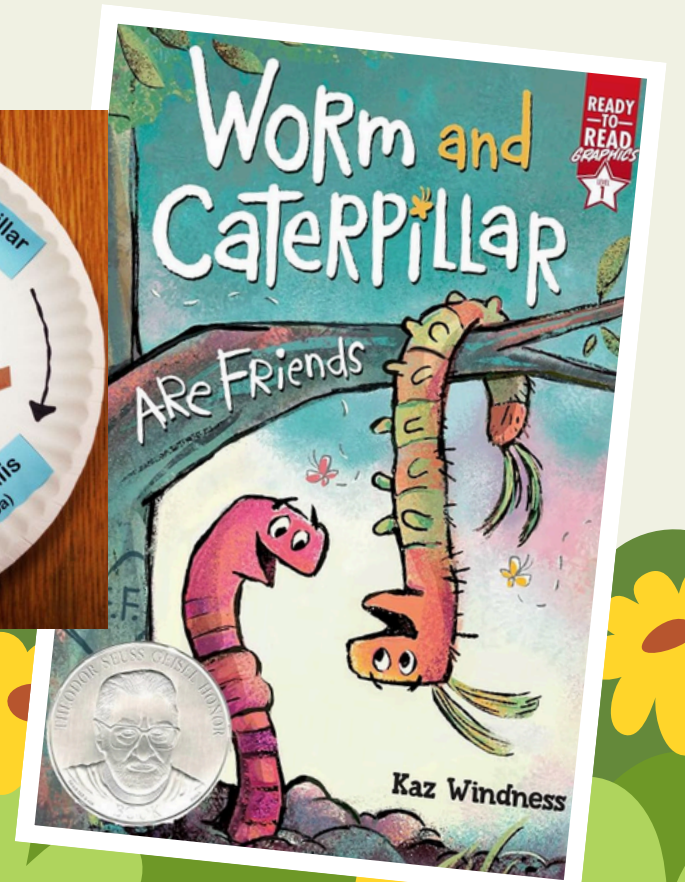
Powder Powered Pollination



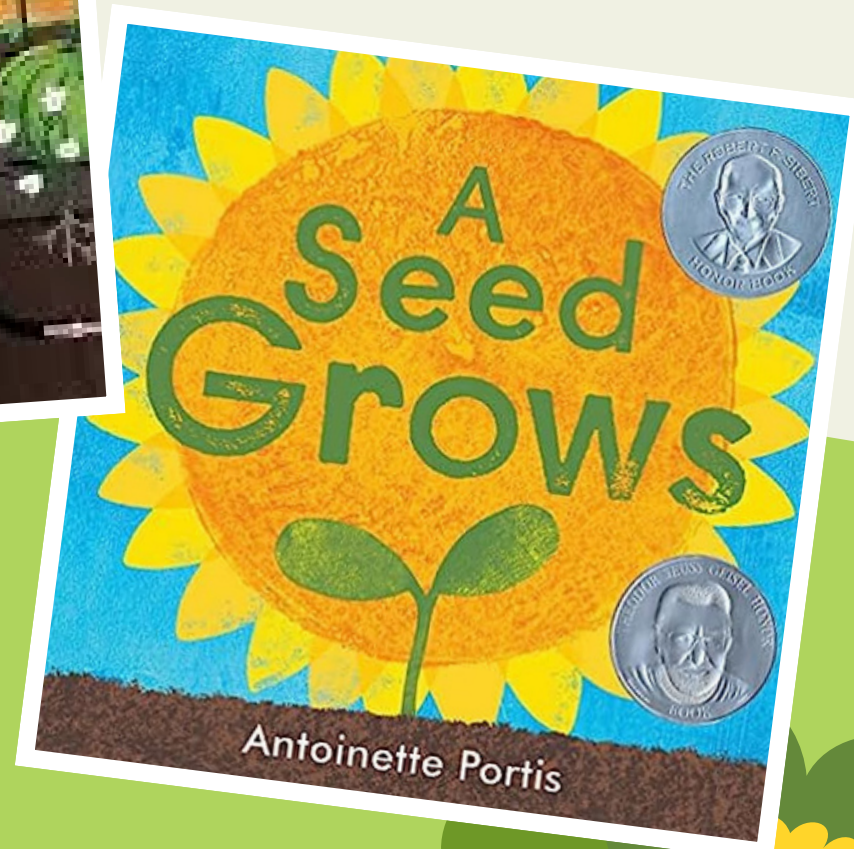
Parts of a Flower

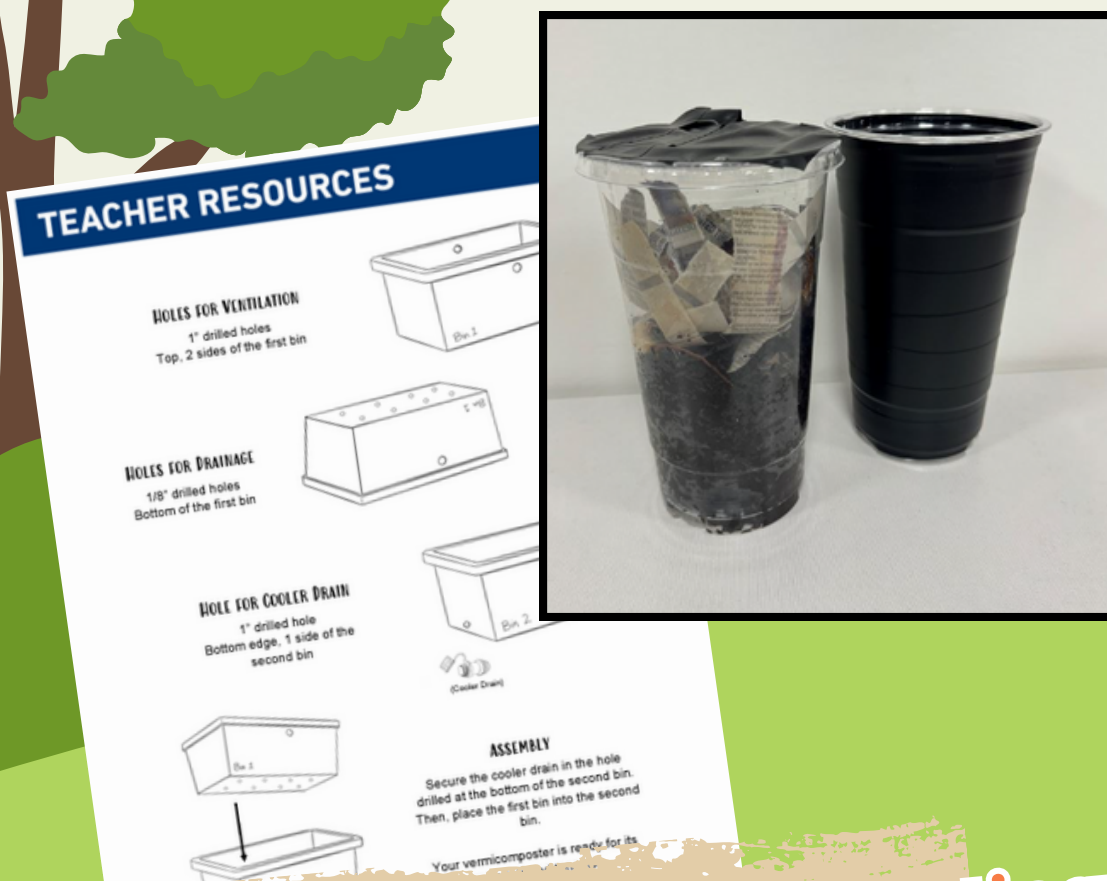
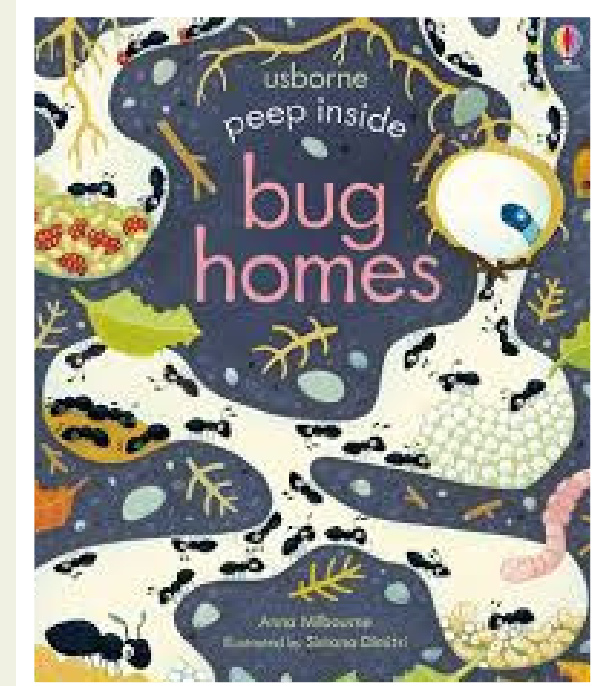
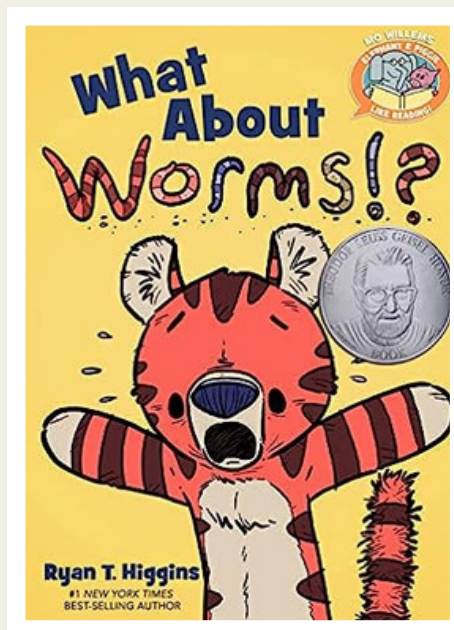
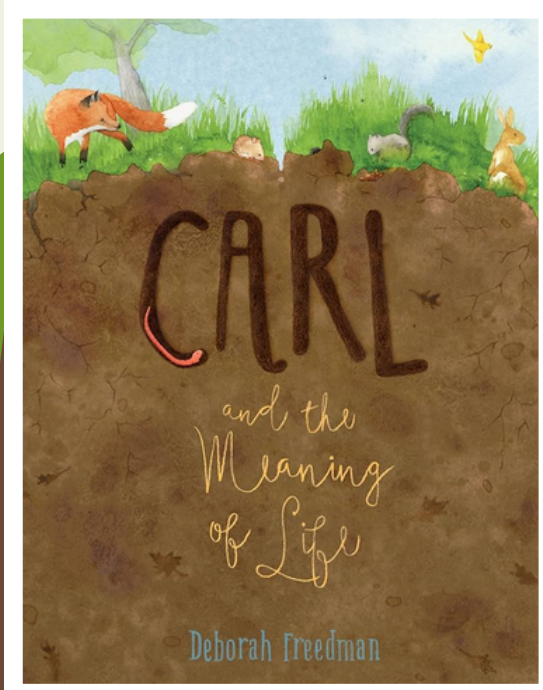


Butterfly Lifecycle



SOIL YOUR UNDIES





Classroom Vermicomposting

Earthworm Writing

life cycle	cocoons
hatching	earthworm
wiggle	soil

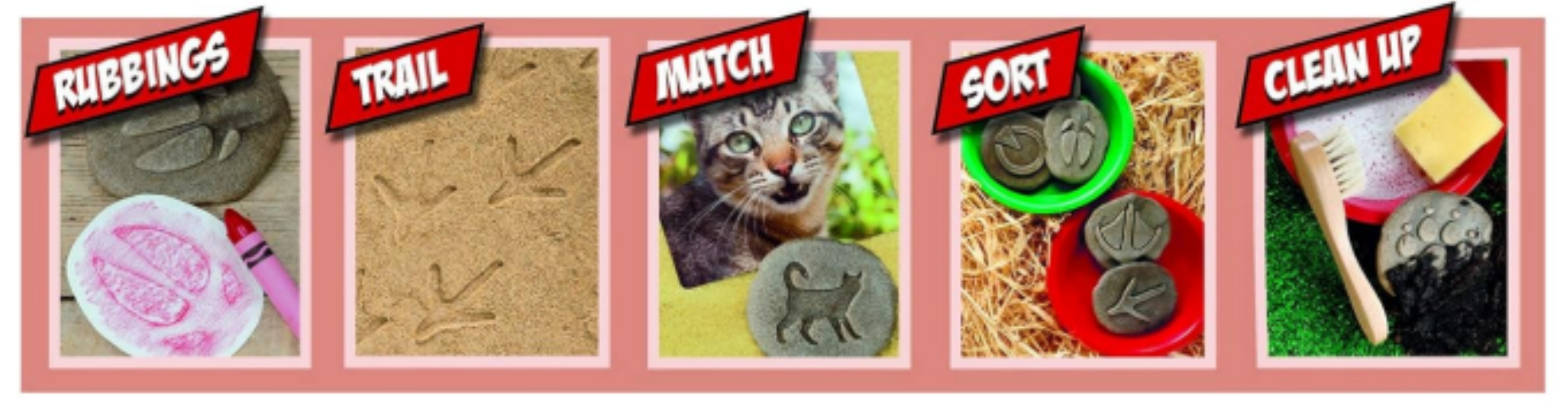
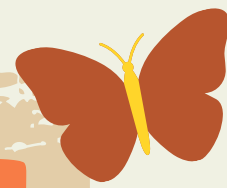
Beneficial Bugs Scavenger Hunt



Good Bugs, Bad Bugs Memory



ANIMAL TRACKS



White Tailed Deer



Coyote



Raccoon



Horse



Chicken



Cattle

THANK YOU!



iaitc.co/fieldwork



iaitc.co/outdoorag25